

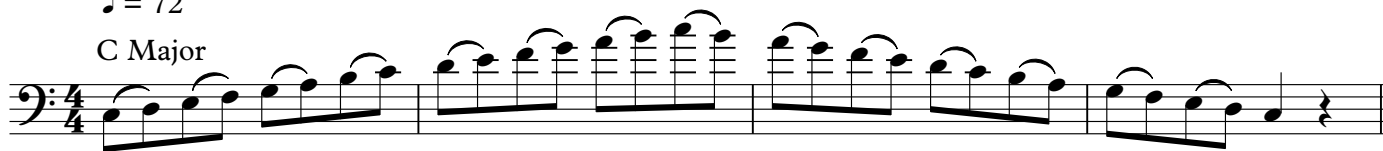
MMEA EASTERN DISTRICT JUNIOR FESTIVAL SCALE REQUIREMENTS - String Bass

Revised 2018

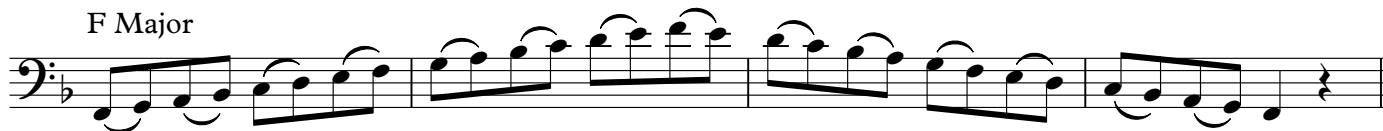
Major Scales are to be performed as indicated in the pattern below at MM = 72
(No chromatic requirement for strings)

♩ = 72

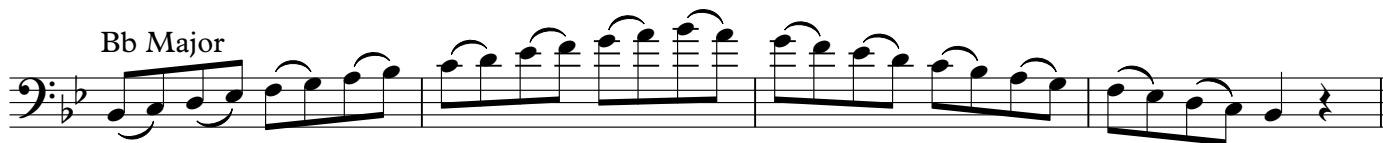
C Major



F Major



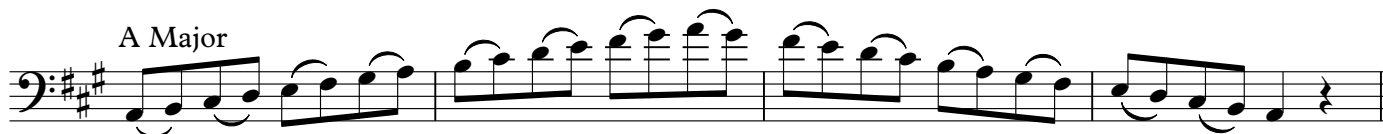
Bb Major



Eb Major



A Major



D Major



G Major

